

# Custom Lighting Systems



CABINET | LINEAR | TASK | MOOD

**KICHLER**   
LIGHTING





# Innovative Lighting Solutions

4	Design Pro LED
8	Design Pro LED Disc
20	TaskWork Modular 12V Xenon & 120V Fluorescent
16	TaskWork Modular 120V Xenon

19	TaskWork Direct Wire 12V Xenon
18	TaskWork Direct Wire 120V Xenon
12	TaskWork Bright Disc
22	TaskWork Linear
26	Selection Guide & Index



Everyday you look for innovative ways to complete a project. At Kichler, we're here to help. We think of the aesthetic possibilities, application opportunities and ease of installation. Then we design around your needs. The result is layer upon layer of rich light that's truly ahead of its time — backed by our 70 years of proven experience and distinguished customer service. With Kichler, you get an extensive selection of LED, linear, task and mood lighting solutions that add depth and texture to your spaces with the utmost subtleness. You'll discover extended life and energy efficient options, low profile offerings and an array of designer finishes all backed by our premium and lifetime limited warranties and available when you need them through our authorized distribution network.

From the newest ultra-thin LED selection to flexible linear lighting, you'll find we're with you — every step of the way.





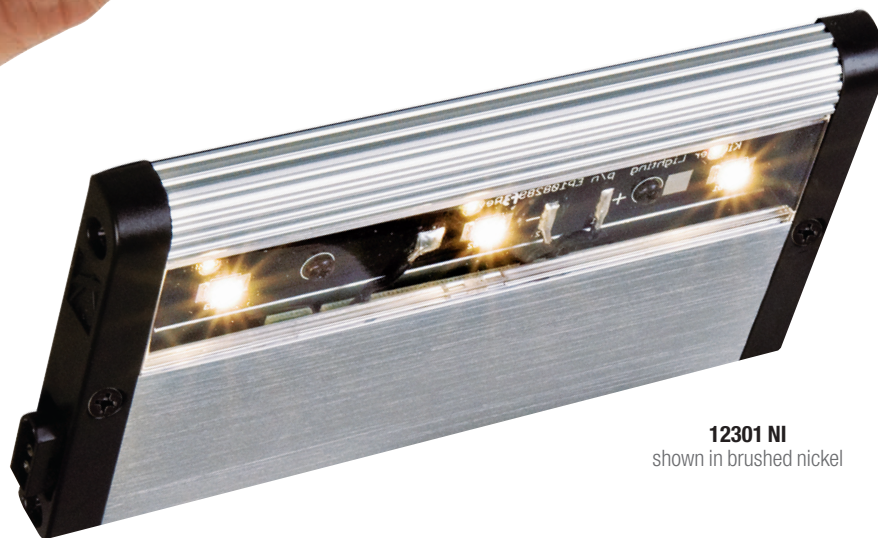
# Design Pro LED

24 Volt DC Patent Pending

## Kichler technology goes low profile



**12301 NI**  
Actual Size: 6"L x 3-1/4"W x 1/2"H  
shown in brushed nickel



**12301 NI**  
shown in brushed nickel



# 2008 Award Winner

Kichler's Design Pro under-cabinet and new LED disc system were awarded the Lighting industry's highest honor in recognition for aesthetic appearance, superior color rendering, high energy efficiency and overall innovation.



POWERED BY  
DESIGN PRO  
TECHNOLOGY



**limited lifetime warranty**  
For more details, visit [www.kichler.com](http://www.kichler.com)

Advanced technology, superior optics and a pure, even flow of light are just few of the professional advancements you'll find with Kichler Design Pro LED. We've taken LED a step further than the rest, delivering high brightness, a cooler operating temperature, superior color rendering LED (CRI >90) and premium energy efficiency. You get a long-life light source (40,000 hours) that uses 75% less energy than incandescent fixtures. Plus, it's high-tech meets high-style: a beautifully sleek unit that brings futuristic LED into the present — and it installs simply and intuitively. The power to have it all is in your hands.



Kichler's LED > 90 Color Rendering Index



vs. Competitor's LED



# Design Pro LED

24 Volt DC Patent Pending



Fixtures can be used individually, snap directly together, or connect via interconnect cables to customize the lighting effect.

12303 NI  
Fixture

12350 BK  
Dimming  
Switch

12351 BK  
Nightlight

STEP

1

**SELECT  
APPROPRIATE  
LIGHT FIXTURE  
SIZES & FINISH**

STEP

2

**DIMMING SWITCH &  
NIGHTLIGHT ALLOW  
FOR LIGHT LEVEL  
CONTROL**

STEP

3

**INTERCONNECT  
CABLES CONNECT  
MULTIPLE FIXTURES**

- E**  **12301\* BRZ, NI, WH**
- 3 High Brightness LEDs built in, 4 Watts
  - 6"L x 3-1/4"W x 1/2"H 6"

- A**  **12303\* BRZ, NI, WH**
- 6 High Brightness LEDs built in, 7 Watts
  - 12"L x 3-1/4"W x 1/2"H 12"

-  **12305\* BRZ, NI, WH**
- 9 High Brightness LEDs built in, 10 Watts
  - 18"L x 3-1/4"W x 1/2"H 18"

- B** **Dimming Switch (optional)**  
**12350 BK, WH**
- 4 Position (Off/Low/Medium/High) Use to control light level
  - Installs directly to the supply lead or inline with fixtures

- C** **Night Light Module (optional)**  
**12351 BK, WH**
- Must** be used with 12350 Power Switch
  - Use where low light level is desired for safety or convenience
  - Photo sensor activation
  - Installs directly to the supply lead or inline with fixtures

- D** The interconnect cables are listed Class 2. Interconnect Cables connects multiple fixtures. Wire in accordance with Article 725 of the National Electric Code.
- 12341 BK, WH - Interconnect 9 Inches**
  - 12342 BK, WH - Interconnect 14 Inches**
  - 12343 BK, WH - Interconnect 21 Inches**
  - 12345 BK, WH - Interconnect 10 Feet**

**12348 BK, WH - Female Connector**

- Female connectors join male ends together where necessary



**12349 BK, WH - Male Connector**

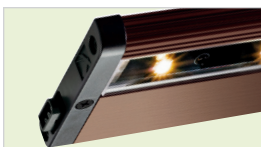
- Male connectors join female ends together where necessary



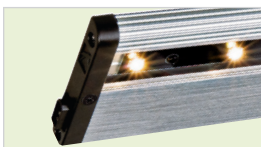
**AVAILABLE FINISHES**

Bronze (BRZ), Brushed Nickel (NI) and White (WH)

BRZ  
12301



NI  
12303



WH  
12305



**ULTRA THIN PROFILE**



Typical Cabinet Light



Kichler Design Pro LED  
Ultra Thin 1/2" profile

**limited lifetime  
warranty**

For more  
details, visit  
[www.kichler.com](http://www.kichler.com)







**12301 NI**  
Fixture

**12354 BK**  
Driver Module,  
see page 10

**12310 BK**  
Design Pro  
LED Disc, see  
page 10

STEP

4

## SELECT POWER SUPPLY

*Design Pro LED Disc can be added to the Design Pro LED system and further expand the possibilities. See page 10 for more details.*

### F Undercabinet Mounted Power Supply

#### 12353 BK, WH - 50 Watt

- 1"H x 5-1.4"W x 5-1/2"D
- Class 2 / 24 Volt DC
- Use with sheathed cable (12-2 or 14-2 with ground)



#### Remote Power Supply

##### 12380\* BK - 100 Watt

- 11"H x 6-1/2"W x 3"D
- Includes (1) 100 Watt driver
- Class 2 / 24 Volt DC



##### 12382\* BK - 200 Watt

- 15½"H x 11"W x 3"D
- Includes (2) 100 Watt drivers
- Class 2 / 24 Volt DC



#### Power Supply Leads

##### 12344 BK, WH - 25' length

##### 12346 BK, WH - 8' length

- Should only be used to connect to Remote Power Supplies 12380 BK and 12382 BK.
- Connect either the male or female plug to fixture or switch. The plug on the other end is cut off and the two leads are connected to the terminals on the Remote Power Supply.
- Class 2 jacket suitable to be run behind walls (please check local codes for compliance).



#### Plug-In Power Supply

##### 12383 BK, WH -30 Watts

- 4' length
- 1 female connector, 12348 (included)
- Class 2 / 24 Volt DC

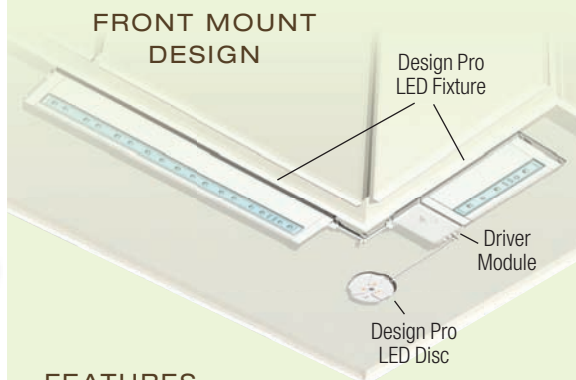


##### 12384 BK, WH -60 Watts

- 4' length
- 1 female connector, 12348 (included)
- Class 2 / 24 Volt DC



**12353 BK**  
Undercabinet  
Mounted  
Power Supply  
(hard wire)



### FRONT MOUNT DESIGN

#### FEATURES

- Ultra Thin 1/2" Profile
- Color Rendering Index >90 CRI
- High Brightness LED
- Higher Efficiency
- 3000K Correlated Color Temperature Average is similar to Xenon
- Long Life Light Source (40,000 Hours)
- Ability to snap fixtures together or interconnect to create an even flow of light
- Captive screws for ease of installation
- Class 2 Listed

#### PERFORMANCE DATA (12303)

TOTAL WATTAGE	7	
LUMENS/WATT	42	
A LIGHT OUTPUT FC (COUNTER FRONT)	9.6	
B LIGHT OUTPUT FC (COUNTER MIDDLE)	27.6	
C LIGHT OUTPUT FC (COUNTER BACK)	32.1	
D LIGHT OUTPUT FC (COUNTER WALL)	30	
CRI (COLOR RENDERING)	>90	
CCT (COLOR TEMPERATURE)	3000K avg.	
LIGHT SOURCE LIFE	40,000 hrs.	

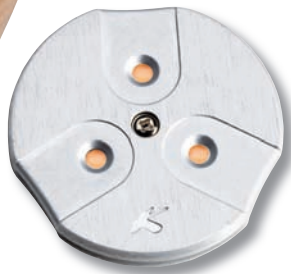


\*Kichler Design Pro LED Undercabinet and Disc System meets ENERGY STAR Requirements when used with our Remote Power Supplies 12380BK and 12382BK, a minimum of any 3 fixtures, and a minimum of 20 watts.

# Design Pro LED Disc

24 Volt DC Patent Pending

## Kichler innovation comes full circle



**12310 NI**  
shown in Brushed Nickel

**12310 BRZ**  
shown actual Size:  
2-3/4" Dia. x 3/8" D,  
in Bronze



**12310 WH**  
shown in White



**12310 BK**  
shown in Black



# 2008 Award Winner

Kichler's Design Pro under-cabinet and new LED disc system were awarded the Lighting industry's highest honor in recognition for aesthetic appearance, superior color rendering, high energy efficiency and overall innovation.



POWERED BY  
DESIGN PRO  
TECHNOLOGY



**limited lifetime  
warranty**

For more  
details, visit  
[www.kichler.com](http://www.kichler.com)

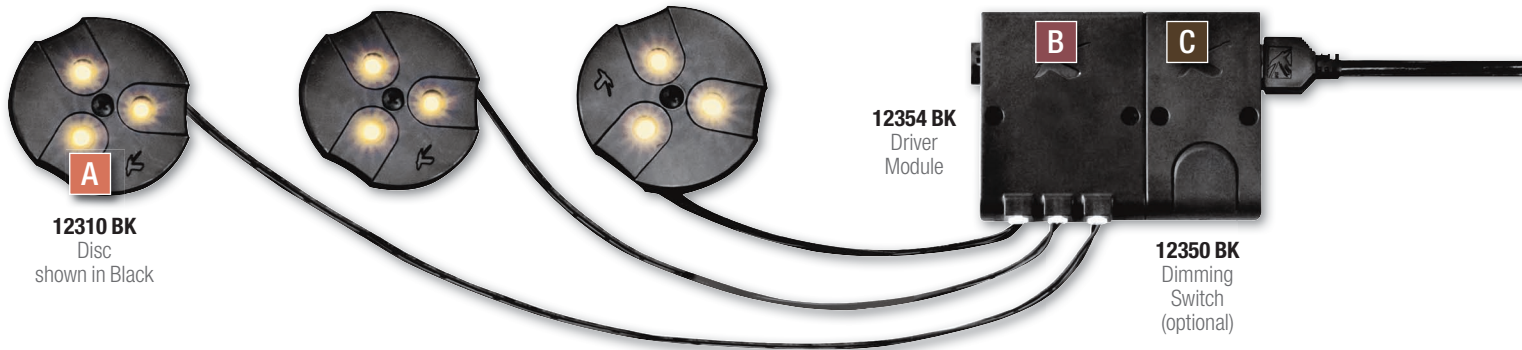
So sleek, they're practically invisible. So versatile, you'll find new application opportunities around and under every niche. That's the beauty of Kichler Design Pro LED Discs. An ultra thin 3/8" profile means there's no need to recess the fixture. Each unit is part of our Design Pro LED collection, offering you advanced technology, superior optics and a pure, even flow of light. And, the cool operating temperature of the LED technology gives you a beautiful light source that can go virtually anywhere — inside a curio, below a cabinet, you name it.

Of course, installation is just as versatile: wiring ties into any Design Pro lighting configuration and each disc comes with the wiring pre-spooled. Just pull out the wire length you need, and the rest will stay neatly tucked into place.



# Design Pro LED Disc

24 Volt DC Patent Pending



STEP

1

**SELECT APPROPRIATE NUMBER OF DISCS & FINISH**

STEP

2

**DIMMING SWITCH & NIGHTLIGHT ALLOW FOR LIGHT LEVEL CONTROL**

STEP

3

**INTERCONNECT CABLES CONNECT MULTIPLE DESIGN PRO DISCS OR FIXTURES**

- A**  **12310\* BK, BRZ, NI, WH LED Disc**
- 3 High Brightness LEDs built in, 3 Watts
  - 2 3/4" Dia. x 3/8" D
  - Unique spooled wire design (36")
  - Must be used with 12354 BK, WH Driver Module



- B** **Driver Module 12354 BK, WH - LED Disc Connector/Driver**
- Connects up to three Design Pro LED Discs
  - Must be used with 12310 Design Pro LED Discs



- 12347 BK, WH LED Disc Wire Extension (optional)**
- Adds 3' of length for greater installation flexibility



- C** **Dimming Switch (optional) 12350 BK, WH**
- 4 Position (Off/Low/Medium/High)
  - Use to control light level
  - Installs directly to the supply lead or inline with fixtures
  - Use one per run

- Night Light Module (optional) 12351 BK, WH**

- Must** be used with 12350 Power Switch
- Use where low light level is desired for safety or convenience
- Photo sensor activation
- Installs directly to the supply lead or inline with fixtures



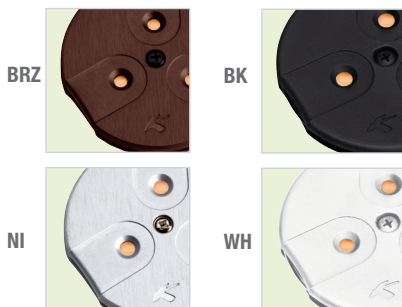
- D** The interconnect cables are listed Class 2. Interconnect cables connects multiple fixtures. Wire in accordance with Article 725 of the National Electric Code.
- 12341 BK, WH - Interconnect 9 Inches**
  - 12342 BK, WH - Interconnect 14 Inches**
  - 12343 BK, WH - Interconnect 21 Inches**
  - 12345 BK, WH - Interconnect 10 Feet**

- 12348 BK, WH - Female Connector**
- Female connectors join male ends together where necessary
- 12349 BK, WH - Male Connector**
- Male connectors join female ends together where necessary



## AVAILABLE FINISHES

Bronze (BRZ), Brushed Nickel (NI), Black (BK) and White (WH)



## ULTRA THIN PROFILE



Typical 12V Xenon Disc



Kichler Design Pro Disc Ultra Thin 3/8" profile

**limited lifetime warranty**

For more details, visit [www.kichler.com](http://www.kichler.com)







**12353 BK**  
Undercabinet  
Power Supply  
(Hard Wire)

**12301 NI**  
Fixture



*Design Pro LED can be added as an option to the Design Pro LED Disc system and further expand the possibilities. See page 6 for more details.*

STEP

4

## SELECT POWER SUPPLY

### E Undercabinet Power Supplies

#### 12353 BK, WH - 50 Watt

- Compact under cabinet hard wire design
- 5"L x 5 1/2"W x 1"D
- Class 2 / 24 Volt DC
- Use with sheathed cable (12-2 or 14-2 with ground)



### Remote Power Supplies

#### 12380\* BK - 100 Watts

- Remote Power Supply
- 11"H x 6-1/2"W x 3"D
- Includes (1) 100 Watt driver
- Class 2 / 24 Volt DC



#### 12382\* BK - 200 Watts

- Remote Power Supply
- 15 1/2"H x 11"W x 3"D
- Includes (2) 100 Watt drivers
- Class 2 / 24 Volt DC



### Power Supply Leads

#### 12344 BK, WH - 25' length

#### 12346 BK, WH - 8' length

- Should only be used to connect to Remote Power Supplies 12380 BK and 12382 BK.
- Note: Connect either the male or female plug to fixture or switch. The plug on the other end is cut off and the two leads are connected to the terminals on the Remote Power Supply.
- Class 2 jacket suitable to be run behind walls (please check local codes for compliance).



### Plug-In Power Supplies

#### 12383 BK, WH - 30 Watts

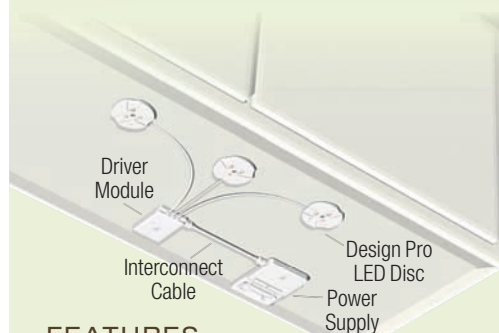
- 4' length
- 1 female connector, 12348 included
- Class 2 / 24 Volt DC



#### 12384 BK, WH - 60 Watts

- 4' length
- 1 female connector, 12348 included
- Class 2 / 24 Volt DC

## DESIGN PRO LED DISC

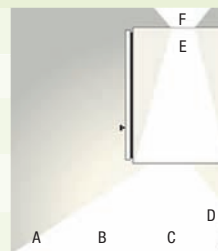


### FEATURES

- Ultra Thin 3/8" Profile x 2-3/4" Diameter
- Color Rendering Index >90
- High Brightness LED
- Higher Efficiency
- 3000K Correlated Color Temperature Average is similar to Halogen but runs much cooler and safer
- Long Life Light Source (40,000 Hours)
- Captive screws for ease of installation
- Class 2 Listed

### PERFORMANCE DATA

LED VS. XENON	12310 LED DISC
TOTAL WATTAGE	4
LUMENS/WATT	36.5
A LIGHT OUTPUT FC (COUNTER FRONT)	2.9
B LIGHT OUTPUT FC (COUNTER MIDDLE)	28.3
C LIGHT OUTPUT FC (COUNTER BACK)	40.6
D LIGHT OUTPUT FC (COUNTER WALL)	30
CRI (COLOR RENDERING)	>90
CCT (COLOR TEMPERATURE)	3000K avg.
LIGHT SOURCE LIFE	40,000 hrs.

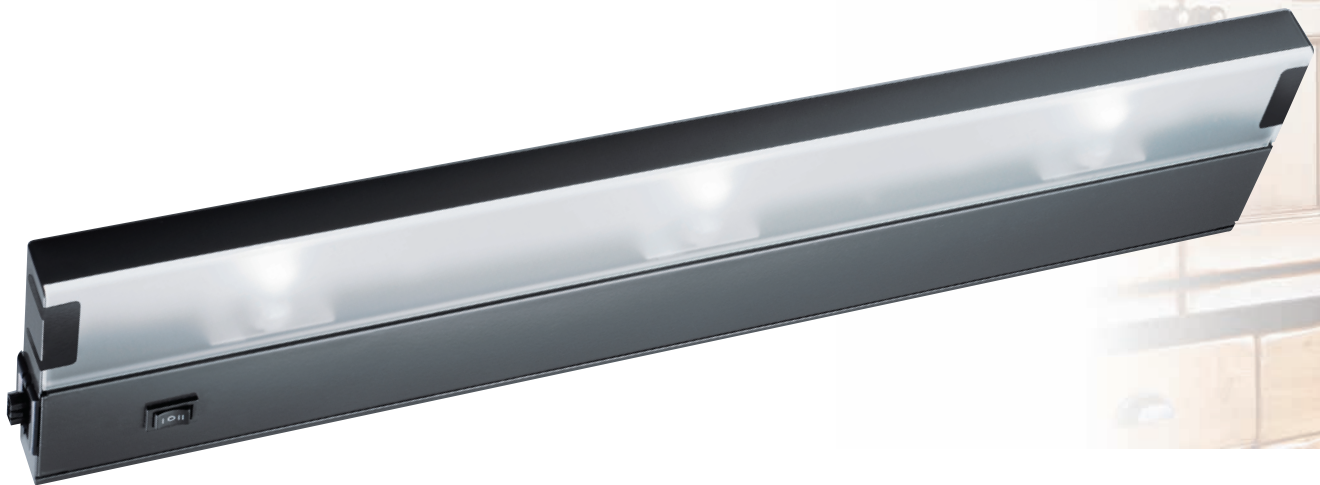


\*Kichler Design Pro LED Undercabinet and Disc System meets ENERGY STAR Requirements when used with our Remote Power Supplies 12380BK and 12382BK, a minimum of any 3 fixtures, and a minimum of 20 watts.

# TaskWork Modular & Direct Wire

Xenon & Fluorescent

Innovative thinking  
takes you  
out of the box



**12213 BZ**  
shown in Bronze





Wherever you need to take light, our TaskWork Modular & Direct wire fixtures can accommodate. They feature tried and true long life Xenon technology that offers both hard wire and plug-in configurations and easy installation features, like push-in wiring. Plus, they come in multiple sizes and finishes for maximum design and application flexibility. Our TaskWork Modular 120 Volt Xenon or Fluorescent and TaskWork Modular 12 Volt Xenon allow you to install one fixture or several across multiple cabinet spans with ease. And, our TaskWork Direct 12 Volt & 120 Volt Xenon put warm, natural task or ambient lighting where it's needed — while staying within a budget.

# TaskWork Modular

## 12 Volt Xenon & 120 Volt Fluorescent



A

**10563 BRZ**  
Fixture  
shown in Bronze

*Fixtures can be used individually, snapped directly together, or connected via interconnect cables to customize the lighting application.*

STEP

1

### SELECT APPROPRIATE LIGHT FIXTURE SIZE & FINISH

#### Starter Kit

##### 10568 BRZ, NI, WH



- 1 light, 14" Interconnect Cable and Wiring Module
- 12 Volt, 18 Watt Xenon bulb included
- 7"L x 5"W x 1"H

##### 10567 BRZ, NI, WH



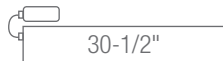
- 2 light, 14" Interconnect Cable and Wiring Module
- 12 Volt, 18 Watt Xenon bulbs included
- 13"L x 5"W x 1"H

##### 10566 BRZ, NI, WH



- 3 light, 21" Interconnect Cable and Wiring Module
- 12 Volt, 18 Watt Xenon bulbs included
- 22"L x 5"W x 1"H

##### 10585 BRZ, NI, WH



- 4 light, 21" Interconnect Cable and Wiring Module
- 12 Volt, 18 Watt Xenon bulbs included
- 30-1/2"L x 5"W x 1"H

#### AVAILABLE FINISHES

Bronze (BRZ), Nickel (NI) and White (WH)



BRZ



NI



WH

#### Modular (Fixture Only) Xenon

##### C 10565 BRZ, NI, WH

7"

- 1 light, 7"L x 5"W x 1"H
- 12 Volt, 18 Watt Xenon bulb included

##### 10564 BRZ, NI, WH

13"

- 2 light, 13"L x 5"W x 1"H
- 12 Volt, 18 Watt Xenon bulbs included

##### A 10563 BRZ, NI, WH

22"

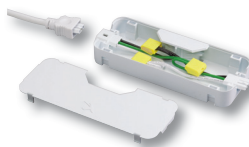
- 3 light, 22"L x 5"W x 1"H
- 12 Volt, 18 Watt Xenon bulbs included

##### 10587 BRZ, NI, WH

30"

- 4 light, 30-1/2"L x 5"W x 1"H
- 12 Volt, 18 Watt Xenon bulbs included

**10570 BK, WH**  
Wire Module  
shown in White



#### Modular Accessories

##### E 10570\* BK, WH – Wire Module

- 7-3/4"L x 2-5/8"W x 1"H
- Provides for safe, push-in wiring without the use of wire connectors
- Interconnect cables easily join wire module and fixtures
- Integrated supply wire strain relief for one or two wires
- Snap-on cover
- Use for hard-wire installation
- Use with sheathed cable (12-2 or 14-2 with ground)

##### D 10569\*\* BRZ, NI, WH

#### Master Switch (optional)

- 3-1/2"L x 5"W x 1"H
- Can be installed between the wiring module and the first fixture to control the entire system. Or, it can be positioned between fixtures to control those fixtures located after it in line.

\* For use only with Kichler interconnect cables as part of TaskWork Modular systems

\*\* For use only with Kichler interconnect cables as part of TaskWork Modular systems. Note, too, that switch assembly will plug directly into the side of any TaskWork Modular fixture. This eliminates the need to use an interconnect cable check mounting location for adequate space

##### 10575\*\* BRZ, NI, WH

#### Plug-in Master Switch (optional)

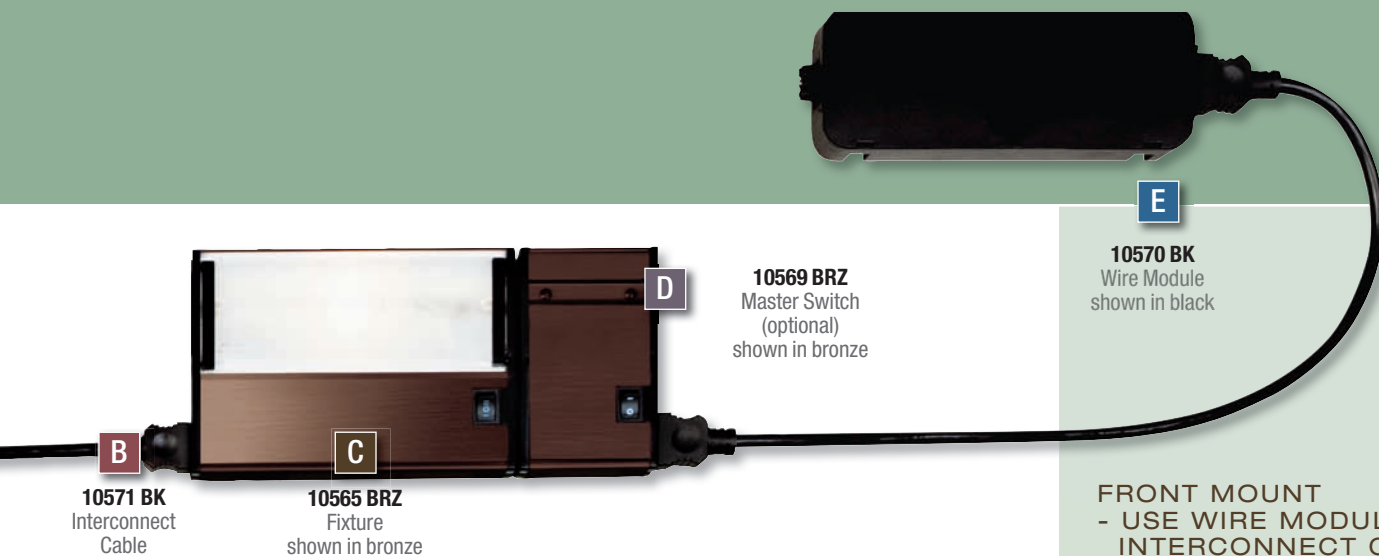
- 3-1/2"L x 5"W x 1"H
- Allows control of cabinet lighting without accessing house wiring



**10575 BRZ, NI, WH**  
Plug-In Master Switch  
shown in White







**10571 BK**  
Interconnect  
Cable

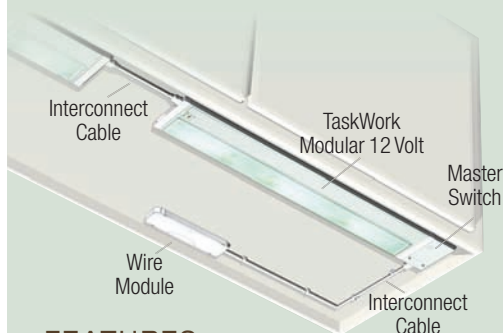
**10565 BRZ**  
Fixture  
shown in bronze

**10569 BRZ**  
Master Switch  
(optional)  
shown in bronze

**10570 BK**  
Wire Module  
shown in black

## STEP 2 INTERCONNECT CABLES CONNECT MULTIPLE FIXTURES

### FRONT MOUNT - USE WIRE MODULE AND INTERCONNECT CABLES



#### Cord & Plug Fixture Xenon 10562 WH

- 1 light, 7"L x 5"W x 1"H, 36" Power Cord
- 12 Volt, 18 Watt Xenon bulb included



#### 10561 WH

- 2 light, 13"L x 5"W x 1"H, 36" Power Cord
- 12 Volt, 18 Watt Xenon bulbs included



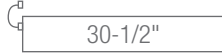
#### 10560 WH

- 3 light, 22"L x 5"W x 1"H, 36" Power Cord
- 12 Volt, 18 Watt Xenon bulbs included



#### 10586 WH

- 4 light, 30-1/2"L x 5"W x 1"H 36" Power Cord
- 12 Volt, 18 Watt Xenon bulbs included



#### Replacement Bulbs

##### 10574 CLR - Replacement Bulb

- 12 Volt, 18 Watt Xenon, clear

- B** **10571 BK, WH** – Interconnect 9 Inches  
**10572 BK, WH** – Interconnect 14 Inches  
**10573 BK, WH** – Interconnect 21 Inches

- For longer interconnect cable lengths, multiple cables may be connected together



**10571 BK, WH**  
Interconnect Cable  
shown in White



**10572 BK, WH**  
Interconnect Cable  
shown in White



**10573 BK, WH**  
Interconnect Cable  
shown in White

#### FEATURES

- 1" Profile x 5" Width
- 12 Volt, 18 Watt Xenon bulb(s) included
- Unique front-mount design as recommended by the American Lighting Association
- Ability to snap fixtures together to create an even flow of light
- Captive screws for ease of installation
- Durable, Anodized Brushed Bronze, Nickel or Powder-Coated White Finish
- Extruded aluminum construction
- Hinged tempered glass diffuser
- High/Low On/Off Switch
- Built-in electronic transformer
- cUL Listed

#### PERFORMANCE DATA

XENON FLUORESCENT  
10564 10026

	10564	10026
LUMENS/WATT	6	52
A LIGHT OUTPUT FC (COUNTER FRONT)	14.6	4.1
B LIGHT OUTPUT FC (COUNTER MIDDLE)	45	15.8
C LIGHT OUTPUT FC (COUNTER BACK)	57.8	22.5
D LIGHT OUTPUT FC (COUNTER WALL)	43	14.9
CRI (COLOR RENDERING)	100	80
CCT (COLOR TEMPERATURE)	2700K	4100K
LIGHT SOURCE LIFE (HRS)	10,000	7,500

#### Fluorescent Fixtures (bulb included)

##### 10026 WH

8 Watt Max. (T5) Fluorescent Light  
12-1/2"L x 4-3/4"W x 1"H



**10026 WH**  
Fixture

##### 10027 WH

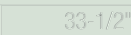
13 Watt Max. (T5) Fluorescent Light  
21-1/2"L x 4-3/4"W x 1"H



**10027 WH**  
Fixture

##### 10028 WH

21 Watt Max. (T5) Fluorescent Light  
33-1/2"L x 4-3/4"W x 1"H



**10028 WH**  
Fixture

**T24** Remember to include Kichler Lighting Systems in your energy efficient and Title 24 kitchens.

# TaskWork Modular

## 120 Volt Xenon

**12213 SS**  
 Fixture shown in  
 Brushed Stainless Steel

*Fixtures can be used individually, snapped  
 directly together, or connected via interconnect  
 cables to customize the lighting effect.*



STEP

# 1

**SELECT  
 APPROPRIATE  
 LIGHT FIXTURE  
 SIZE & FINISH**

**C 12211 BZ, SS, WH**

- 1 light, 7"L x 5"W x 1"H
- 120 Volt, 20 Watt Xenon bulb included

7"

**12212 BZ, SS, WH**

- 2 light, 13"L x 5"W x 1"H
- 120 Volt, 20 Watt Xenon bulbs included

13"

**A 12213 BZ, SS, WH**

- 3 light, 22"L x 5"W x 1"H
- 120 Volt, 20 Watt Xenon bulbs included

22"

**12214 BZ, SS, WH**

- 4 light, 30"L x 5"W x 1"H
- 120 Volt, 20 Watt Xenon bulbs included

30"

**12215 BZ, SS, WH**

- 5 light, 40"L x 5"W x 1"H
- 120 Volt, 20 Watt Xenon bulbs included

40"

STEP

# 2

**INTERCONNECT  
 CABLES CONNECTS  
 MULTIPLE FIXTURES**

**B 10571 BK, WH – Interconnect 9 Inches  
 10572 BK, WH – Interconnect 14 Inches  
 10573 BK, WH – Interconnect 21 Inches**

- For longer interconnect cable lengths,  
 multiple cables may be connected together



**10571 BK, WH**  
 Interconnect Cable  
 shown in white



**10572 BK, WH**  
 Interconnect Cable  
 shown in white



**10573 BK, WH**  
 Interconnect Cable  
 shown in white

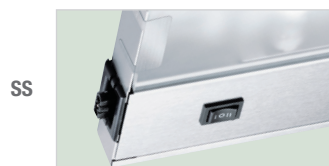
STEP

# 3

**SELECT APPROPRIATE  
 LIGHT FIXTURE SIZE  
 & FINISH OF EACH  
 ADDITIONAL FIXTURE**

**AVAILABLE FINISHES**

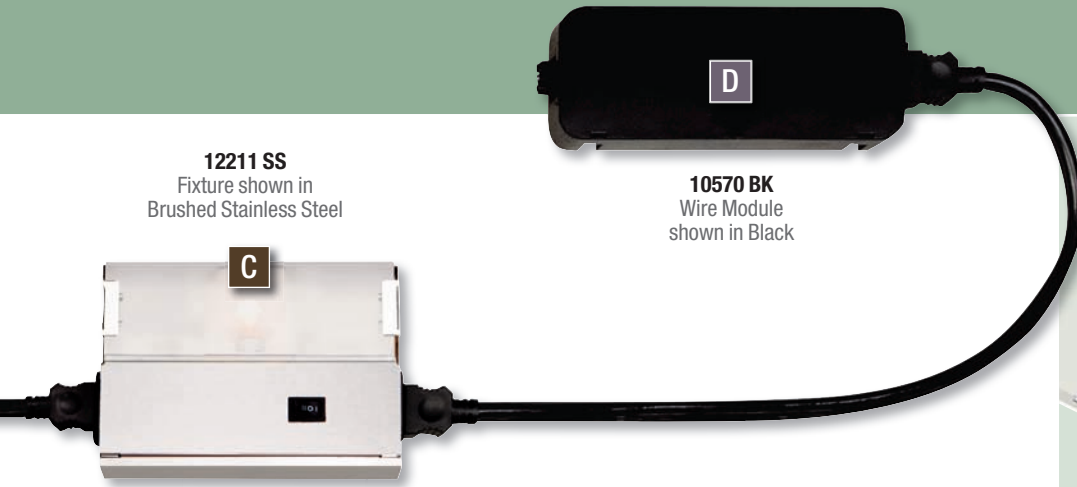
*Bronze (BZ), Brushed Stainless Steel (SS)  
 and White (WH)*





**12211 SS**  
 Fixture shown in  
 Brushed Stainless Steel

**10570 BK**  
 Wire Module  
 shown in Black



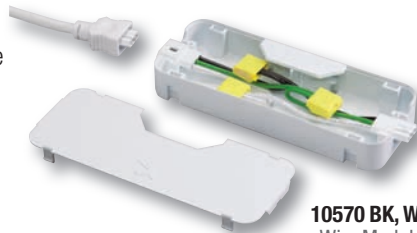
STEP

# 4

**POWER TO SYSTEM  
 WITH WIRE MODULE  
 (OPTIONAL)**

**D 10570 BK, WH – Wire Module**  
 7-3/4"L x 2-5/8"W x 1"H

- Provides for safe, push-in wiring without the use of wire connectors
- Interconnect cables easily join wire module and fixtures
- Integrated supply wire strain relief for one or two wires
- Snap-on cover
- Use for hard-wire installation
- Use with sheathed cable (12/2 or 14/2 with ground)



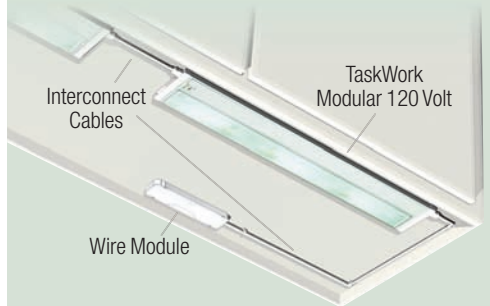
**10570 BK, WH**  
 Wire Module  
 shown in White

## BACK OF WALL - DIRECT WIRE CONNECT



Back of wall or unique front-mount design as recommended by the American Lighting Association

## FRONT MOUNT - USE WIRE MODULE AND INTERCONNECT CABLES

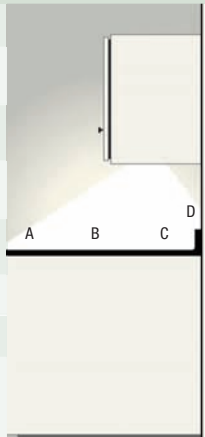


## FEATURES

- Low profile 1" profile x 5" Width
- 120 Volt, 20 Watt Xenon bulb(s)
- Direct wire or inter-connectability
- Ability to snap fixtures together to create an even flow of light
- Durable Anodized Bronze, Brushed Stainless Steel or Powder-Coated White finish
- High/Low On/Off Switch
- cUL Listed
- UL approved NM & BX single cable connector included

## PERFORMANCE DATA (12212)

	<b>LUMENS/WATT</b>	5
A	<b>LIGHT OUTPUT FC (COUNTER FRONT)</b>	7.6
B	<b>LIGHT OUTPUT FC (COUNTER MIDDLE)</b>	20.2
C	<b>LIGHT OUTPUT FC (COUNTER BACK)</b>	24.5
D	<b>LIGHT OUTPUT FC (COUNTER WALL)</b>	28.5
	<b>CRI (COLOR RENDERING)</b>	100
	<b>CCT (COLOR TEMPERATURE)</b>	2620K
	<b>LIGHT SOURCE LIFE (HRS)</b>	2,500



# TaskWork Direct Wire

## 12 Volt Xenon

**10584 BZ**  
Fixture  
shown in Bronze



STEP



**SELECT APPROPRIATE LIGHT  
FIXTURE SIZE & FINISH.  
DETERMINE DIRECT WIRE OR  
CORD & PLUG POWER SUPPLY.**

**10579 BZ, SS, WH**

7"

- 1 light, 7"L x 5"W x 1"H
- 12 Volt, 18 Watt Xenon bulb included

**10580 BZ, SS, WH**

12-1/4"

- 2 light, 12-1/4"L x 5"W x 1"H
- 12 Volt, 18 Watt Xenon bulbs included

**10581 BZ, SS, WH**

22-1/2"

- 3 light, 21-1/2"L x 5"W x 1"H
- 12 Volt, 18 Watt Xenon bulbs included

**10584 BZ, SS, WH**

30"

- 4 light, 30"L x 5"W x 1"H
- 12 Volt, 18 Watt Xenon bulbs included

**10595 BZ, SS, WH**

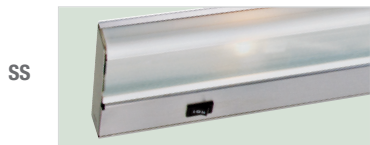
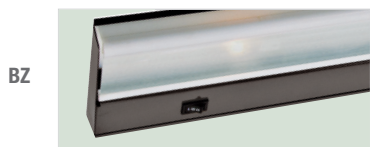
40"

- 5 light, 40" L x 5" W x 1" H
- 12 Volt, 18 Watt Xenon bulbs included

TaskWork Direct 12 Volt Xenon offers you a simple installation solution for illuminating a task area or adding ambient lighting.

**AVAILABLE FINISHES**

Bronze (BRZ), Brushed Stainless Steel (SS) and White (WH)



**Accessories**

**10582 WH – 38" Power Cord and Plug accessory (not shown)**

**10588 SI - Duplex BX Cable Connector**

- Connects two cables to any convenient wireway knockouts located on the fixture. This allows for a group of fixtures in a series in series using a single knockout. Connectors listed for use with 14-2 steel armored cable, 3/8" trade size reduced wall flexible steel, aluminum conduit or steel flexible metal conduit (not shown)

**10589 SI - Connector for NM & BX Cable**

- UL approved for both non-metal (NM) & BX cables
- Connects a single cable convenient wireway knockouts located on the fixture (not shown)

**Replacement Bulbs**

**10574 CLR - Replacement Bulb**

- 12 Volt, 18 Watt Xenon, clear

**BACK MOUNT DESIGN**



**FEATURES**

- Low profile 1" profile x 5" Width
- 12 Volt, 18 Watt Xenon bulb(s) included
- Durable, Brushed Stainless Steel or Powder-Coated White or Bronze finishes
- Fastener-free hinge assembly
- Keyhole mounting
- Easy-lock poly-tempered glass diffuser
- UL approved NM & BX single cable connector included
- High/Low On/Off Switch
- Built-in electronic transformer
- cUL Listed

**PERFORMANCE DATA (10580)**

LUMENS/WATT	6.1
A LIGHT OUTPUT FC (COUNTER FRONT)	6.7
B LIGHT OUTPUT FC (COUNTER MIDDLE)	19
C LIGHT OUTPUT FC (COUNTER BACK)	26.9
D LIGHT OUTPUT FC (COUNTER WALL)	16.5
CRI (COLOR RENDERING)	100
CCT (COLOR TEMPERATURE)	2700K
LIGHT SOURCE LIFE (HRS)	10,000





# TaskWork Direct Wire

## 120 Volt Xenon



**12013 BZ**  
Fixture  
shown in Bronze

STEP



### SELECT APPROPRIATE LIGHT FIXTURE SIZE & FINISH

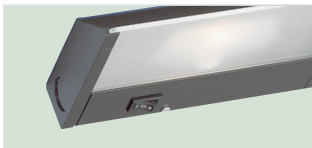
- 12011 BZ, SI, WH** 
  - 1 light, 7"L x 5"W x 1-1/4"H
  - 120 Volt, 20 Watt Xenon bulb included
- 12012 BZ, SI, WH** 
  - 2 light, 12"L x 5"W x 1-1/4"H
  - 120 Volt, 20 Watt Xenon bulbs included
- 12013 BZ, SI, WH** 
  - 3 light, 22"L x 5"W x 1-1/4"H
  - 120 Volt, 20 Watt Xenon bulbs included
- 12014 BZ, SI, WH** 
  - 4 light, 30"L x 5"W x 1-1/4"H
  - 120 Volt, 20 Watt Xenon bulbs included

TaskWork Direct 120 Volt Xenon design features large wiring compartments and multiple 1/2" trade-size knockouts for fast and easy installation.

#### AVAILABLE FINISHES

Painted Bronze (BZ), Silver (SI) and White (WH)

BZ



SI



WH



#### Replacement Bulbs

##### 12090 CLR – Replacement Bulb

- 120 Volt, 20 Watt Xenon, clear

#### BACK MOUNT DESIGN



#### FEATURES

- Low Profile 1 1/4" Profile x 5" Width
- 120 Volt, 20 Watt Xenon bulb(s)
- Painted Bronze, Silver or White finish
- High/Low On/Off Switch
- cUL Listed

#### PERFORMANCE DATA (12012)

	<b>LUMENS/WATT</b>	5	
A	<b>LIGHT OUTPUT FC (COUNTER FRONT)</b>	7.6	
B	<b>LIGHT OUTPUT FC (COUNTER MIDDLE)</b>	20.2	
C	<b>LIGHT OUTPUT FC (COUNTER BACK)</b>	24.5	
D	<b>LIGHT OUTPUT FC (COUNTER WALL)</b>	28.5	
	<b>CRI (COLOR RENDERING)</b>	100	
	<b>CCT (COLOR TEMPERATURE)</b>	2620K	
	<b>LIGHT SOURCE LIFE (HRS)</b>	2,500	



# TaskWork Bright Disc

12 Volt Xenon



## Put the accent on innovation

From under kitchen cabinets to inside an open bookcase, TaskWork Bright Discs put a soft touch of 20 Watt light where you need it. They're constructed with high quality, all-metal casings in six popular finishes to blend into any environment. And, versatile Class 2 transformer choices simplify professional installation in virtually any new construction or remodeling application.



**12501 BZ**  
shown Actual Size:  
1" H x 3" D in Bronze





**STEP 1**  
**SELECT NUMBER OF BRIGHT DISCS & FINISH**

- 12501 BK – Black
- 12501 BZ – Bronze
- A** 12501 CO – Copper
- 12501 NI – Nickel
- 12501 PB – Polished Brass
- 12501 WH – White
  - 1 light, 1" H x 3" D
  - Supplied with 72" of lead wire
  - 12 Volt, 20 Watt Xenon bulb included

**Replacement Bulb**

- 12590CLR - Replacement Bulb**
- 12 Volt, 20 Watt replacement bulb

**AVAILABLE FINISHES**

Black (BK), Bronze (BZ), Copper (CO), Nickel (NI), Polished Brass (PB) and White (WH)



**STEP 2**  
**SELECT POWER SUPPLY**

**Remote Transformer**

**12530 BK 60 Watt – 12 Volt Non-Enclosed Electronic Transformer**

- Replacement component for transformer 12533, 12534
- 2-1/8" H x 1-1/4" W x 3/4" D

**B** **12531 BK 60 Watt – 12 Volt Enclosed Electronic Transformer**

- 6-1/2" H x 1-1/2" W x 1-1/2" D
- Class 2

**12533 BK 3x60\* (180) Watt 12 Volt Enclosed Electronic Transformer**

- 5-1/4" H x 4-3/4" W x 1-3/4" D
- Class 2

**12534 BK 6x60\* (360) Watt 12 Volt Enclosed Electronic Transformer**

- 8-1/2" H x 5-1/4" W x 1-3/4" D
- Class 2

**Plug-In Transformer**  
**12532 BK, WH 60\* Watt 12 Volt Electronic Transformer**

- Class 2

\* 20 Watt Minimum load required for each 60 Watt transformer



**UNIVERSAL MOUNT DESIGN**

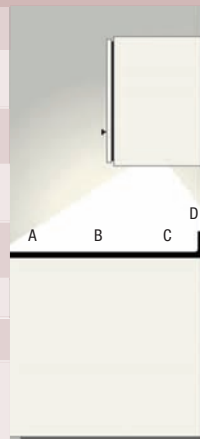


**FEATURES**

- 1" Profile x 3" Diameter
- 12 Volt, 20 Watt Xenon bulb
- Suitable for recessed or flush mount installations. Not suited for ceiling or wall installation.
- Durable Nickel, Copper, Polished-Brass, Powder-Coated White, Bronze or Black finishes available
- cUL Listed Class 2

**PERFORMANCE DATA**

	LUMENS/WATT	4.9
<b>A</b> LIGHT OUTPUT FC (COUNTER FRONT)	14.5	
<b>B</b> LIGHT OUTPUT FC (COUNTER MIDDLE)	57.7	
<b>C</b> LIGHT OUTPUT FC (COUNTER BACK)	73	
<b>D</b> LIGHT OUTPUT FC (COUNTER WALL)	40.5	
<b>CRI</b> (COLOR RENDERING)	100	
<b>CCT</b> (COLOR TEMPERATURE)	3000K	
<b>LIGHT SOURCE LIFE</b> (HRS)	5,000	



# TaskWork Linear

12 Volt & 24 Volt Xenon

Innovation  
takes flexibility  
to the max



**10215 BK**  
shown Actual Size:  
1-15/16"L x 11/16"W x 3/4"H  
in Black



**10215 WH**  
shown Actual Size:  
1-15/16"L x 11/16"W x 3/4"H  
in White





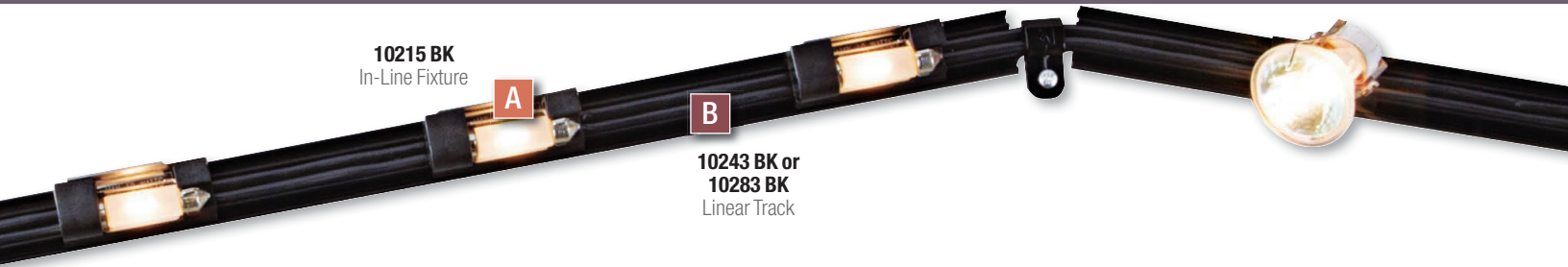


Put away the special tools. With Kichler TaskWork Linear Lighting, you'll have versatile, low voltage Xenon lighting that installs in a snap just about anywhere. Create a customized design under, above or inside cabinetry or architectural details and produce instant lighting interest. The fixture's narrow profile is virtually invisible once it's installed.



# TaskWork Linear

## 12 Volt & 24 Volt Xenon



**10215 BK**  
In-Line Fixture

**10243 BK or 10283 BK**  
Linear Track

STEP  
**1**  
**EASY-TO-INSTALL TRACK**

- B** **10243 BK, WH (50 pack)**  
**10283 BK, WH (10 pack)**
- Snaps on the score, every 6"
  - Captive screws every 6"
  - White or Black finish
  - 4' linear track

#### Accessories

- 10240 BK, WH – Wire End Caps**  
**10241 BK, WH – Track End Caps**  
**10298 WH – Double-Sided Tape (1/2" x 15')**  
**10299 – Box of Screws (100 pieces)**

**10240 BK, WH**  
Wire End Caps



**10241 BK, WH**  
Track End Caps

**10244 BK, WH**  
Splicing Block Connector  
(listed enclosure required)



STEP  
**2**  
**LOW-VOLTAGE CABLE**

- C** **10230 BK, WH – Linear cable 25 feet**  
**10232 BK, WH – Linear cable 100 feet**  
**10233 BK, WH – Linear cable 500 feet**  
**10234 BK, WH – Linear cable 1000 feet**

#### Stabilizer Clip

##### 10242 BK, WH

- Designed to attach Kichler Linear SPT cable to any wood surface
- Prevents cable from sagging
- Allows for making turns in cable in areas where cable is not supported by track

#### Splicing Block Connector

##### 10244 BK, WH (listed enclosure required)

##### 10254 BK, WH - Splicing Block with Enclosure

- Four connections allow up to four rounds of NM or Kichler's SPT cable in any combination
- Possible combinations
  1. NM cable in and up to three SPT cables out
  2. SPT cable in and up to three SPT cables out
  3. NM cable in and up to three NM cables out. All wiring should be in accordance with local and national codes

**10254 BK, WH**  
Splicing Block with Enclosure



STEP  
**3**  
**SELECT NUMBER OF IN-LINE OR DIRECTIONAL FIXTURES AND FINISH. FOR IN-LINE, SELECT VOLTAGE & WATTAGE. FOR DIRECTIONAL, SELECT 12° SPOT OR 26° FLOOD & VOLTAGE.**

#### **A** In-Line Fixture

- 10215 BK, WH – 12 Volt/5 Watt**  
**10216 BK, WH – 12 Volt/10 Watt**  
**10217 BK, WH – 24 Volt/5 Watt**  
**10218 BK, WH – 24 Volt/10 Watt**
- Shipped with frosted bulb pre-installed
  - Easy to handle, no sharp edges, no bent reflectors
  - Less than width of track

#### In-Line Replacement Lamps

- 10245 – 12 Volt/5 Watt**  
**10246 – 24 Volt/5 Watt**  
**10247 – 12 Volt/10 Watt**  
**10248 – 24 Volt/10 Watt**
- Bright Xenon bulb
  - Frosted for no glare
  - 5 or 10 Watt options

#### Multi-Directional Fixture

##### 10261 BK, WH

- Order bulbs separately
- G4, MRC-11
- Added versatility for your Linear Lighting
- Highlight architectural features
- Overall dimensions (with bulb) 2-1/4"H x 1-1/2"W x 1-1/2"H
- Maintain clearance of 3" from other surfaces. Space no closer than 3" from other lampholders

#### Multi-Directional Lamps

- 10256 CLR – 12 Volt, 12° spot (20-Watt)**  
**10257 CLR – 12 Volt, 26° flood (20-Watt)**  
**10258 CLR – 24 Volt, 12° spot (20-Watt)**  
**10259 CLR – 24 Volt, 26° flood (20-Watt)**
- Rated life 2,000 hours



**10261 BK, WH**  
Multi-Directional Fixture with  
**10256 CLR**  
Multi-Directional Lamp

#### AVAILABLE FINISHES

Black (BK) and White (WH)



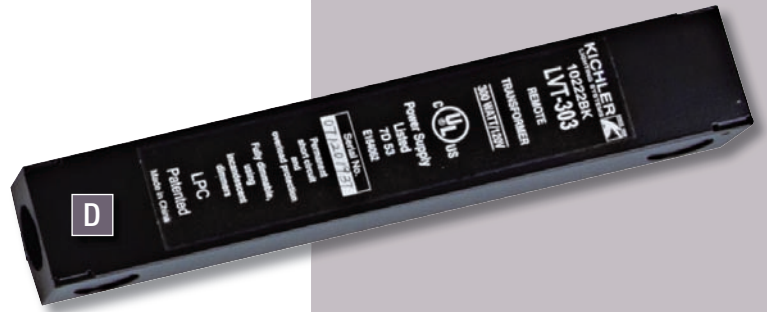
**10215 BK**  
In-Line Fixture



**10215 WH**  
In-Line Fixture



**10230 BK**  
Linear Cable



**10222 BK**  
Remote Electronic  
Transformer

# STEP 4

## SELECT POWER SUPPLY MORE THAN ONE POWER SUPPLY MAY BE NEEDED

- Resettable short-circuit protection
- Built-in overload protection
- All transformers are UL 2108 listed
- Magnetic Premium Transformers have screw terminals for faster wiring, no wire nuts. Slim profile allows for easily concealed mounting.

### Electronic/Plug-In Transformers

#### **10210 BK – 12 Volt/150 Watt**

#### Electronic Hardwire Transformer

- 35-Watt minimum load required
- 1-1/2"D x 4"H x 4"L (not shown)

#### **10214 BK, WH – 12 Volt/75 Watt**

#### Electronic Plug-in Transformer

- 10' of linear cable attached
- 3"D x 9"H x 5"L

### Remote Electronic Transformers

**D** **10221BK – 12 Volt/150 Watt Enclosed Electronic, Hardwire Transformer**

- 20 Watt min. load required
- 1-1/2"D x 1-1/2"H x 6-1/2"L

#### **10222BK – 12 Volt/300 Watt Enclosed Electronic, Hardwire Transformer**

- 50 Watt min. load required
- 1-1/2"D x 1-1/2"H x 9-1/2"L

### Remote Magnetic Transformers

#### **10205 BK – 12 Volt/150 Watt Magnetic**

- 3-1/2"D x 6"H x 3"L

#### **10204 BK – 12 Volt/300 Watt Magnetic**

- 4-1/8"D x 6"H x 3-1/2"L

#### **10206 BK – 12 Volt/2 x 300 Watt Magnetic**

- 5"D x 9-1/2"H x 4-1/2"L

#### **10208 BK – 24 Volt/300 Watt Magnetic**

- 4-1/8"D x 6"H x 3-1/2"L

#### **10209 BK – 24 Volt/600 Watt Magnetic**

- 4-7/8"D x 9-1/2"H x 4-1/2"L

#### **10219 BK – 24 Volt/2 x 600 Watt Magnetic**

- 6"D x 10-1/2"H x 5-1/2"L

### Remote Magnetic Premium Transformers- Exclusively by Kichler®

#### **10207 WH – 12 Volt/150 Watt magnetic**

- 6-3/4"D x 2-5/16"H x 10"L

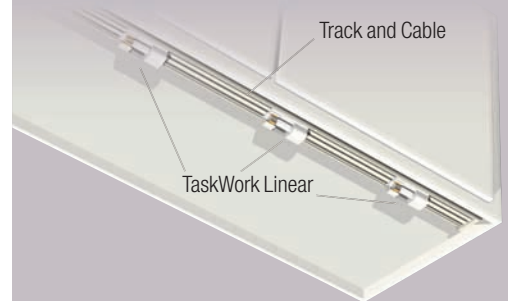
#### **10213 WH – 12 Volt/300 Watt magnetic**

- 6-3/4"D x 2-5/16"H x 10"L

#### **10211 WH – 12 Volt/2 x 300 Watt**

- 6-3/4"D x 2-5/16"H x 10"L

### FRONT MOUNT DESIGN



### FEATURES

- Low profile
- Flexible installation
- Black and White finish
- 12 Volt and 24 Volt options
- 5-Watt and 10 Watt options
- cUL Listed

### PERFORMANCE DATA (10216 10 WATT ON 4" CENTER)

	LUMENS/WATT	4.8
A	LIGHT OUTPUT FC (COUNTER FRONT)	14
B	LIGHT OUTPUT FC (COUNTER MIDDLE)	27
C	LIGHT OUTPUT FC (COUNTER BACK)	32
D	LIGHT OUTPUT FC (COUNTER WALL)	28
	CRI (COLOR RENDERING)	100
	CCT (COLOR TEMPERATURE)	2800K
	LIGHT SOURCE LIFE (HRS)	3,000



**10222 BK**  
Hardwire Electronic  
Transformer



**10210 BK**  
Hardwire Electronic  
Transformers



**10214 BK, WH**  
Plug-In Electronic  
Transformers



**10219 BK (shown)**  
**10208 BK**  
**10209 BK**  
Magnetic Transformers



**10206 BK (shown)**  
**10204 BK**  
**10205 BK**  
Magnetic  
Transformers

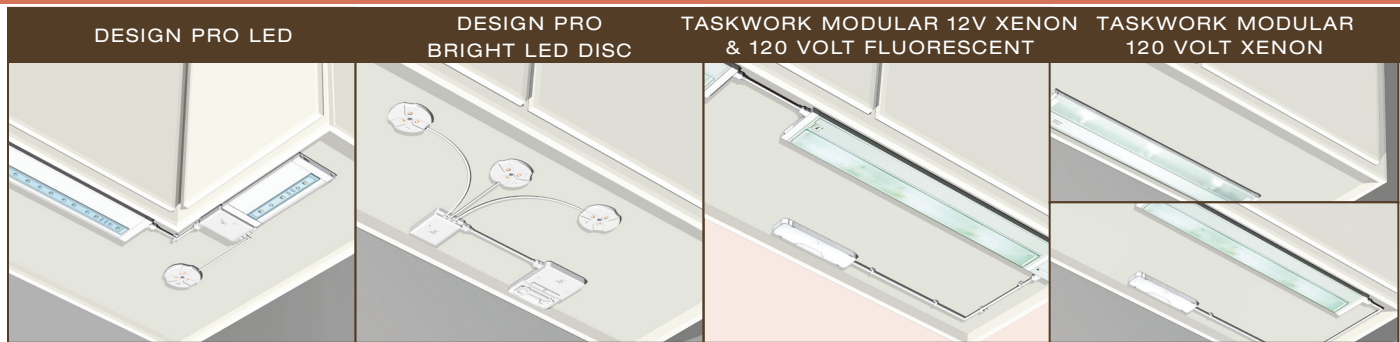


**10207 WH (shown)**  
**10213 WH**  
**10211 WH**  
Magnetic Premium  
Transformers



**10221 BK**  
Hardwire Electronic  
Transformer

# Selection Guide & Index



## KEY FEATURES

- Ultra-Thin 1/2" Profile
- Color Rendering Index > 90 CRI
- High brightness LED
- Higher efficiency
- 3,000 K Correlated Color Temperature Average is Similar to Xenon
- Long Life Light Source (40,000 HRS)
- Ability to snap fixtures together or interconnect to create an even flow of light
- Captive screws for ease of installation
- Class 2 Listed



Kichler Design Pro LED Undercabinet and Disc System meets ENERGY STAR Requirements when used with our Remote Power Supplies 12380BK and 12382BK, a minimum of any 3 fixtures, and a minimum of 20 watts.

## KEY FEATURES

- Ultra-Thin 3/8" Profile x 2-3/4" Diameter
- Color Rendering Index > 90 CRI
- High brightness LED
- Higher efficiency
- 3,000K Correlated Color Temperature Average is similar to Halogen & Xenon
- Long Life Light Source (40,000 HRS)
- Captive screws for ease of installation
- Class 2 Listed



## KEY FEATURES

- 1" Profile x 5" Width
- 12 Volt, 18 Watt Xenon Bulb(s)
- Unique Front-Mount Design as Recommended by the American Lighting Association
- Ability to Snap Fixtures Together to Create an Even Flow of Light
- Captive Screws for Ease of Installation
- Durable, Anodized Brushed Bronze, Nickel or Powder-Coated White Finish
- Extruded Aluminum Construction
- Hinged Tempered Glass Diffuser
- High/Low On/Off Switch
- Built-in electronic transformer



## KEY FEATURES

- Low profile 1" Profile x 5" Width
- 120 Volt, 20 Watt Xenon Bulb(s)
- Direct Wire or Inter-Connectability
- Back of Wall or Unique Front-Mount Design as Recommended by the American Lighting Association
- Ability to snap fixtures together to create an even flow of light
- Durable Anodized Bronze, Brushed Stainless Steel or Powder-Coated White finish
- High/Low On/Off Switch



## INSTALLATION

- Interconnect
- Fixtures interconnect
- Plug-in power supply available
- Front mount
- Easy to mount with captive screws
- Class 2 rated
- Remote power supply\*

## INSTALLATION

- Interconnect
- Fixtures Interconnect
- Plug-in power supply available
- Center Mount
- Easy to mount with captive screws
- Class 2 rated
- Remote power supply\*

## INSTALLATION

- Xenon - interconnect, Fluorescent - direct wire & interconnect
- Fixtures interconnect
- Front mount

## INSTALLATION

- Direct wire

## INDEX

MODEL	PG	MODEL	PG
12301 BRZ	6	12346 WH	7
12301 NI	6	12353 BK	7
12301 WH	6	12353 WH	7
12303 BRZ	6	12380 BK	7
12303 NI	6	12382 BK	7
12303 WH	6	12383 BK	7
12305 BRZ	6	12383 WH	7
12305 NI	6	12384 BK	7
12305 WH	6	12384 WH	7
12341 BK	6		
12341 WH	6		
12342 BK	6		
12342 WH	6		
12343 BK	6		
12343 WH	6		
12345 BK	6		
12345 WH	6		
12348 BK	6		
12348 WH	6		
12349 BK	6		
12349 WH	6		
12350 BK	6		
12350 WH	6		
12351 BK	6		
12351 WH	6		
12344 BK	7		
12344 WH	7		
12346 BK	7		

## INDEX

MODEL	PG	MODEL	PG
12310 BK	10	12353 BK	11
12310 BRZ	10	12353 WH	11
12310 NI	10	12380 BK	11
12310 WH	10	12382 BK	11
12341 BK	10	12383 BK	11
12341 WH	10	12383 WH	11
12342 BK	10	12384 BK	11
12342 WH	10	12384 WH	11
12343 BK	10		
12343 WH	10		
12345 BK	10		
12345 WH	10		
12347 BK	10		
12347 WH	10		
12348 BK	10		
12348 WH	10		
12349 BK	10		
12349 WH	10		
12350 BK	10		
12350 WH	10		
12351 BK	10		
12351 WH	10		
12354 BK	10		
12354 WH	10		
12344 BK	11		
12344 WH	11		
12346 BK	11		
12346 WH	11		

## INDEX

MODEL	PG	MODEL	PG
10563 BRZ	14	10585 WH	14
10563 NI	14	10587 BRZ	14
10563 WH	14	10587 NI	14
10564 BRZ	14	10587 WH	14
10564 NI	14	10026 WH	15
10564 WH	14	10027 WH	15
10565 BRZ	14	10028 WH	15
10565 NI	14	10560 WH	15
10565 WH	14	10561 WH	15
10566 BRZ	14	10562 WH	15
10566 NI	14	10571 BK	15
10566 WH	14	10571 WH	15
10567 BRZ	14	10572 BK	15
10567 NI	14	10572 WH	15
10567 WH	14	10573 BK	15
10568 BRZ	14	10573 WH	15
10568 NI	14	10574 CLR	15
10568 WH	14	10586 WH	15
10569 BRZ	14		
10569 NI	14		
10569 WH	14		
10570 BK	14		
10570 WH	14		
10575 BRZ	14		
10575 NI	14		
10575 WH	14		
10585 BRZ	14		
10585 NI	14		

## INDEX

MODEL	PG	MODEL	PG
10571 BK	16		
10571 WH	16		
10572 BK	16		
10572 WH	16		
10573 BK	16		
10573 WH	16		
12211 BZ	16		
12211 SS	16		
12211 WH	16		
12212 BZ	16		
12212 SS	16		
12212 WH	16		
12213 BZ	16		
12213 SS	16		
12213 WH	16		
12214 BZ	16		
12214 SS	16		
12214 WH	16		
12215 BZ	16		
12215 SS	16		
12215 WH	16		
10570 BK	17		
10570 WH	17		





**KEY FEATURES**

- Low profile 1" Profile x 5" Width
- 12 Volt, 18 Watt Xenon Bulb(s)
- Durable, Brushed Stainless Steel or Powder-Coated White or Bronze finishes
- Fastener-free hinge assembly
- Keyhole mounting
- Easy-lock poly-tempered glass diffuser.
- Single BX Connector Included
- High/Low On/Off Switch
- Built-in electronic transformer



**KEY FEATURES**

- Low profile 1 1/4" Profile x 5" Width
- 120 Volt, 20 Watt Xenon Bulb(s)
- Painted Bronze, Silver or White finish
- High/Low On/Off Switch



**KEY FEATURES**

- 1" Profile x 3" Diameter
- 12 Volt, 20 Watt Xenon Bulb
- Suitable for recessed or flush mount installations. Not suited for ceiling or wall installation.
- Durable Nickel, Copper, Polished-Brass, Powder-Coated White, Bronze or Black finishes available
- UL Listed Class 2



**KEY FEATURES**

- Low profile
- Flexible installation
- Black and White finish
- 12 Volt and 24 Volt Options
- 5 and 10 Watt Options



**INSTALLATION**

- Direct wire
- Built-in transformer\*

**INSTALLATION**

- Direct wire
- Fixtures interconnect
- Plug-in version available
- Front mount
- Easy to mount with captive screws

**INSTALLATION**

- Direct wire
- Center mount
- Class 2 rated
- Remote Transformer\*

**INSTALLATION**

- Direct wire
- Front mount
- Easy to mount with captive screws
- Remote Transformer\*

**INDEX**

MODEL	PG
10574 CLR	18
10579 BZ	18
10579 SS	18
10579 WH	18
10580 BZ	18
10580 SS	18
10580 WH	18
10581 BZ	18
10581 SS	18
10581 WH	18
10582 WH	18
10584 BZ	18
10584 SS	18
10584 WH	18
10588 SI	18
10589 SI	18
10595 BZ	18
10595 SS	18
10595 WH	18

**INDEX**

MODEL	PG
12011 BZ	19
12011 SI	19
12011 WH	19
12012 BZ	19
12012 SI	19
12012 WH	19
12013 BZ	19
12013 SI	19
12013 WH	19
12014 BZ	19
12014 SI	19
12014 WH	19
12090 CLR	19

**INDEX**

MODEL	PG
12501 BK	21
12501 BZ	21
12501 CO	21
12501 NI	21
12501 PB	21
12501 WH	21
12530 BK	21
12531 BK	21
12532 BK	21
12532 WH	21
12533 BK	21
12534 BK	21
12590 CLR	21

**INDEX**

MODEL	PG	MODEL	PG
10215 BK	24	10248	24
10215 WH	24	10254 BK	24
10216 BK	24	10254 WH	24
10216 WH	24	10256 CLR	24
10217 BK	24	10257 CLR	24
10217 WH	24	10258 CLR	24
10218 BK	24	10259 CLR	24
10218 WH	24	10261 BK	24
10230 BK	24	10261 WH	24
10230 WH	24	10283 BK	24
10232 BK	24	10283 WH	24
10232 WH	24	10298 WH	24
10233 BK	24	10299	24
10233 WH	24	10204 BK	25
10234 BK	24	10205 BK	25
10234 WH	24	10206 BK	25
10240 BK	24	10207 BK	25
10240 WH	24	10208 BK	25
10241 BK	24	10209 BK	25
10241 WH	24	10210 BK	25
10242 BK	24	10211 BK	25
10242 WH	24	10213 BK	25
10243 BK	24	10214 BK	25
10243 WH	24	10214 WH	25
10244 BK	24	10219 BK	25
10244 WH	24	10221 BK	25
10245	24	10222 BK	25
10246	24		
10247	24		

\*Installation Tip: To avoid frequency interference, locate and install Transformer/Power Supplies at least 3 ft. from television, computer, radio or other electronic receivers.

# Design Pro LED & TaskWork System Applications



**A** Design Pro LED  
See pages 4-7

**B** Design Pro LED Discs  
See pages 8-11

**C** Linear Xenon  
See pages 22-25

**KICHLER® LIGHTING**  
World Headquarters  
7711 E. Pleasant Valley Rd.  
PO Box 31810  
Cleveland, Ohio 44131-8010

**www.kichler.com**  
Distribution Centers:  
Atlanta, Georgia  
Cleveland, Ohio  
Las Vegas, Nevada

125M/08-LS-420  
Catalog No. **K1108**  
Printed in USA  
© Copyright All rights reserved.  
Kichler Lighting.

The majority of newer Kichler Lighting fixtures are U.S.  
Patent Pending. Many are also Patent Pending in Canada.



**KICHLER**   
LIGHTING